

**STATPack**<sup>TM</sup>  
WWW.STATPACK.ORG

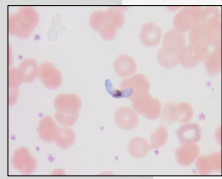
# Connecting Medical Laboratory Networks

A.L. Fruhling<sup>1</sup>, M.L. Lund<sup>1</sup>, D.J. Rowland<sup>2</sup>, R.K. Noel, B.K. Schweitzer<sup>2</sup>, J.J. Mathewson<sup>3</sup>, J.F. Murray<sup>3</sup>, R.E. Flahart<sup>4</sup>, S.E. Gabel<sup>4</sup>, S.A. Riley<sup>4</sup>, K.M. Weiss<sup>1</sup>, G.A. Hoff<sup>1</sup>, A.R. Sambol<sup>2</sup>, S.H. Hinrichs<sup>2</sup>.

<sup>1</sup>College of Information Science & Technology, University of Nebraska at Omaha, Omaha, NE, <sup>2</sup>Nebraska Public Health Laboratory, University of Nebraska Medical Center, Omaha, NE, <sup>3</sup>Oklahoma State Department of Health, Oklahoma City, OK, <sup>4</sup>Kansas Department of Health and Environment, Topeka, KS.

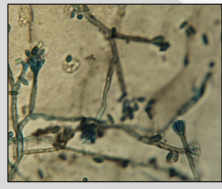
## Consultation

### Malarial



Images sent by St. Mary's Hospital in Enid, OK to consult with Oklahoma Public Health Laboratory one week after installation and training on STATPack. Determined to be *Plasmodium falciparum* based on morphological characteristics.

### Fungal

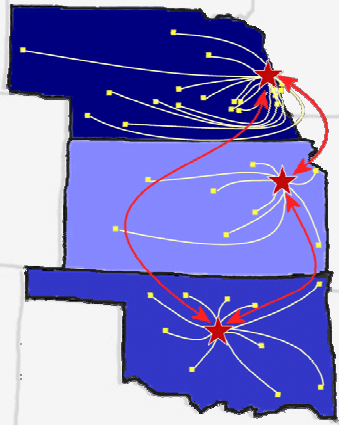


Images sent to the Nebraska Public Health Laboratory (NPHL) with a request for fungal consultation. Unable to rule-out *Stachybotrys lymphadenitis*. Recommendation was for the submitting laboratory to send the specimen to a reference laboratory for further characterization.

### Bacterial



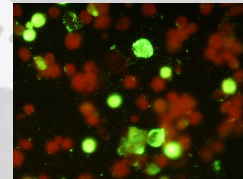
Images received at the NPHL for consultation. Catalase positive, non-hemolytic, non-motile, large GPR from a blood culture. Sentinel laboratory could not rule-out *Bacillus anthracis*. Morphology was not consistent with *Bacillus anthracis*.



## Education

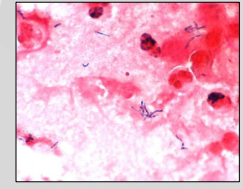
### VZV DFA

Six sentinel laboratories across Nebraska were trained to perform Varicella-Zoster Virus (VZV) Direct Fluorescent Antibody testing as a rule-out for Variola virus (smallpox). This picture represents a positive control slide that one laboratory sent to NPHL.



### Competency Training

A series of Gram-stained slides serve as a repository for clinical competency training and documentation of proficiency. This is used by a clinical hospital laboratory in Nebraska to satisfy their College of American Pathologist (CAP) gram stain competency requirement (MIC.21565).



### Case Study

One example of a STATPack case study was sent to laboratories in Nebraska. The initial STATPack message included antimicrobial susceptibility testing results (Erythromycin R, Clindamycin S). Technique, interpretation, and methodology of the D-test (positive D-test shown) were discussed in this exercise.

